



Schaumburg  
Youth  
Orchestra



## 2 0 0 9 - 2 0 1 0   R E F E R E N C E   G U I D E

---

*The mission of the Schaumburg Youth Orchestra is to promote the continuing growth of the cultural arts in the community by providing area students with an outlet to perform challenging ensemble and orchestral music, and by presenting youth orchestra performances to the community and outlying areas through concerts, recordings and tours.*



Dear SYO Members and Parents:

Welcome to the 2009-10 season of the Schaumburg Youth Orchestra. We're thrilled to be celebrating twenty years of musically enriching lives and look forward to commemorating the anniversary with a gala concert at Chicago's Symphony Center on July 10. For tickets, visit <http://www.cso.org>.

We're delighted to once again offer members unique musical opportunities, including the Symphony Center performance, our videotaped *Chamber Live* series, the highly popular holiday concert, and special performances around town.

This reference guide will provide members and their families a comprehensive resource for the Schaumburg Youth Orchestra. Included are rehearsal and performance schedules, rules and regulations, general guidelines and other pertinent information. Should you have questions or issues that are not addressed in this book, please don't hesitate to contact me at (847) 923-3607 or Orchestra Assistant Cassandra Herman at (847) 923-3604. Our front office not only operates with an open door policy, but, knowing that an organization's success relies on member and family support, we truly enjoy becoming acquainted with everyone affiliated with the program.

Also, keep in mind that up-to-the-minute information is always available on our website at [www.schaumburyouthorchestra.org](http://www.schaumburyouthorchestra.org) or by calling the SYO Hotline at (847) 923-3630.

We're thrilled to have you as a valued member of the organization and look forward to an exciting season.

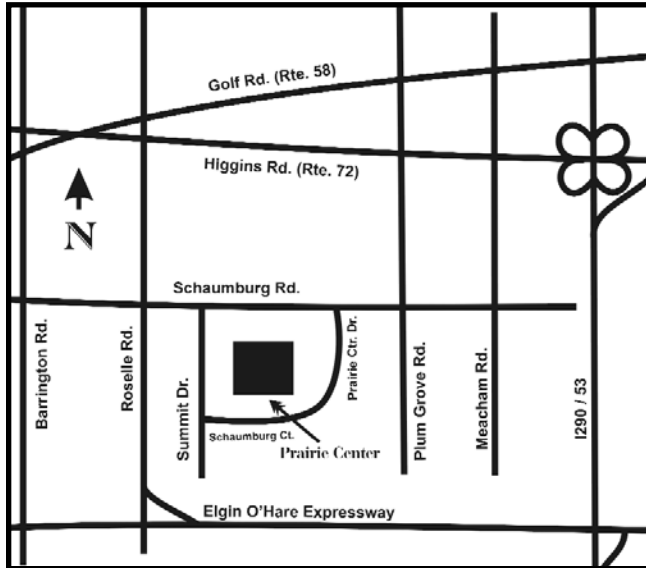
Best Regards,

Rob Pileckis  
Orchestra Manager



## Contact Information

Schaumburg Youth Orchestra  
Prairie Center for the Arts  
201 Schaumburg Court  
Schaumburg, IL 60193



Rob Pileckis, Orchestra Manager  
847-923-3607 phone  
847-923-2410 fax  
rpileckis@ci.schaumburg.il.us

Cassandra Herman, Orchestra Assistant  
847-923-3604 phone  
847-923-2469 fax  
cherman@ci.schaumburg.il.us

SYO Hotline - 847-923-3630  
SYO Attendance - [attendance@schaumburyouthorchestra.org](mailto:attendance@schaumburyouthorchestra.org)  
SYO Website - [www.schaumburyouthorchestra.org](http://www.schaumburyouthorchestra.org)

# SCHAUMBURG YOUTH ORCHESTRA

The Schaumburg Youth Orchestra (SYO) was founded in 1989 as a recreational and educational outlet for young advanced musicians in the Schaumburg area. Originating as a string ensemble with 16 members, the orchestra made its public debut with a concert performance at Schaumburg's 1989 Prairie Arts Festival.

Over the next two seasons, wind and brass musicians were added to the ensemble, increasing membership to 30 students. In the fall, 1991, the offshoot Schaumburg Youth String Orchestra was formed to serve as a training group for the advanced Symphony Orchestra. The program expanded further in 1996 when the String Orchestra branched into two groups: the intermediate-level Schaumburg Youth Chamber Orchestra; and the Schaumburg Youth String Ensemble, geared for beginning grade school musicians. In the spring, 2002, the orchestra program initiated a fourth ensemble to again meet the demands of growing enrollment numbers. The program has been recently restructured to facilitate a progressive graduation from one ensemble to the next and to provide playing opportunities for younger, less experienced musicians. Current registration is at 200, with members from Schaumburg and over thirty outlying communities.

The program enrolls new and returning members by audition at the beginning summer. The orchestras exist to supplement the students' curricular training, as all members are encouraged to participate in their school orchestra or band program. Each of the orchestras performs two concerts annually at the Prairie Center for the Arts. In addition to these performances, the ensembles have played for the public throughout the community, including: Schaumburg Mayoral Ball; Friendship Village; and the District 211 Honors Choir concert. The Schaumburg Youth Symphony Orchestra also presents its annual *Presto!* Holiday Concert featuring classical and contemporary seasonal works. The concert, featuring narration and guest artists, is performed for elementary school students in the morning and again for the public in a full-length evening program. The Symphony Orchestra has performed not only locally, but also abroad with concert tours of Germany, Austria, Prague and Budapest, Japan, and Italy.

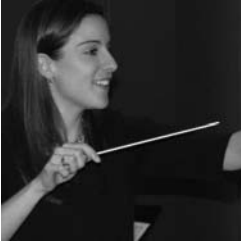
The Symphony Orchestra has recorded three compact disc recordings: *Birth of a Millennium*, which was distributed in 2000 to newborn infants at area hospitals as part of the Village of Schaumburg's millennium celebration; *Songs of Good Cheer*, a collection of classical and popular holiday music released in 2002; and *Prairie Music*, featuring works by American composers.

The SYO also hosts the annual *Chamber Live!* series, featuring small ensembles videotaped live and broadcast on Schaumburg's local cable channel. *Chamber Live!* has earned two national awards, including first place in the Performing Arts Category of the 1999 Hometown Video Festival, sponsored by the Alliance for Community Media, and second place in the Performing Arts Category in the National Association of Telecommunications Officers and Advisors (NATOA) 1999 Programming Awards. The Schaumburg Youth Orchestra was also cited with an Honorable Mention at the 1998 U.S. Conference of Mayor's Livability Awards Program and has received the 2001 and 2008 Youth Orchestra of the Year award by the Illinois Council of Orchestras.

In 2009 the program is celebrating its 20th anniversary with a gala concert at Chicago's Symphony Center on July 10. The program will feature performances by the Schaumburg Youth Symphony Orchestra and an ensemble of former SYO members from the past 20 years.



## ABOUT THE DIRECTORS



**Michelle Freeland** (conductor/director, Schaumburg Youth Concert Orchestra) has been teaching strings in the Chicagoland suburbs for 10 years, and is currently an orchestra director at Batavia High School in Batavia, IL. She holds Bachelor of Music in Violin Performance and Bachelor of Music Education degrees from the University of Illinois at Urbana-Champaign, and a Master of Music Education degree from Northwestern University. Mrs. Freeland has worked with middle school and high school orchestras throughout the Chicagoland area. Highlights include conducting the Churchville Middle School String Orchestra at the Illinois Music Educators Conference in 2003 and the Batavia High School Chamber Orchestra at IMEA and the MENC National Conference in 2008. She has worked as the guest conductor/clinician for Rotolo Middle School orchestras in Batavia, IL, and directing violin sectionals for Elgin Youth Symphony Orchestras and the Illinois Summer Youth Music Junior Orchestras at the University of Illinois. As a professional musician, Mrs. Freeland has been a member of several professional and community orchestras, and has performed as a solo violinist and chamber musician. In the past, her string quartet had the opportunity to work with the members of the Kronos Quartet and the Tackas Quartet. Mrs. Freeland is looking forward to having another great year making music with the Schaumburg Youth Concert Orchestra.



**Greta Hess** (conductor/director, Schaumburg Youth Sinfonia Strings) received her BA in Music Education from St. Olaf College in Northfield, Minnesota. Her teaching experience has included directing the orchestra program at Mt. Prospect Public Schools, working with a home-schooling music program and teaching several private cello and piano students. Mrs. Hess enjoys guest conducting and playing her cello whenever possible. A member of the Arlington Heights Evangelical Free Church, she has been involved in the various music programs, including directing a church youth orchestra and playing in the handbell choir. Her focus these days, however, is on her young children Heather and Joel.



**Joseph Malmquist** (conductor/director, Schaumburg Youth Symphony Orchestra) received his BA with honors from Western Illinois University and his MA with highest honors in performance/string development from the University of Wisconsin. He was a two-time winner of the Concerto Competition, with appearances as conductor of WIU Symphony, and conductor of the graduate/faculty Chamber Orchestra. Other conducting duties include the District 211 Honors and Chamber Orchestras, Conant High School Orchestras, guest conductor of the District U-46 middle school music festival, the OPUS Summer Chamber music camp, and the 1987 Wisconsin All-State Music Camp. In addition to his conducting duties, Mr. Malmquist is a violinist with several orchestras in the Chicago area. Positions include 1st Violin Section of the Elgin Symphony Orchestra, former principal 2nd Violin for the Illinois Chamber Symphony and is also a member of the Solisti di Camera string quartet. He has also had several honors including the Music Performance Union Award for contributions to education, numerous selections to “Who’s Who Among America’s Finest Teachers” and was awarded the Mary Hoffman Award for Excellence in Education by the Illinois Music Educators Association. Mr. Malmquist has conducted the Schaumburg Youth Orchestra since its inception in 1989.



**Dung** (pronounced “Yoom”) **Pham** (conductor/director, Schaumburg Youth String Ensemble) received the Bachelor of Music Education Degree from Augustana College in Rock Island, Illinois and earned the Master of Music Education Degree from the University of Illinois – Urbana-Champaign where she assisted in the undergraduate conducting class and studied conducting with Donald Schleicher. Miss Pham currently directs two orchestras at Hoffman Estates High School in High School Township District 211 as well as the after school chamber ensemble and musical pit orchestra. Previously, she team-taught the elementary through high school orchestra programs in the Rock Island-Milan School Unit District 41, and Freeport School District 145. Miss Pham has served on the faculty of the Illinois Summer Youth Music Camp in Urbana Champaign, as well as the D211 Orchestra Chamber Music Retreat. She has guest conducted music festivals for IMEA (Illinois Music Educators Association) District II/VIII Junior Orchestra, Rockford Lutheran School and Davenport Schools. Miss Pham has served as a guest clinician in western Illinois for John Deere Middle School, Wilson Middle School, and Washington Junior High School and has been an adjudicator for many IHSA solo/ensemble contests, school-sponsored contests, and has served as Orchestra Chair for Illinois IMEA District II and VIII. She is also active as a cellist in chamber music and orchestral performances.

# POLICY AND GENERAL INFORMATION

## PARENT INVOLVEMENT

Parents are an integral part of the SYO, whether it be to volunteer for fundraisers, chaperone for outside performances, or usher at concerts. The SYO also relies on parental support and encouragement when it comes to student's involvement with the program. While it is the student's obligation to be at rehearsal and practice the music, we also consider the parents responsible for making sure their child follows through with his or her commitment. Please go over the rehearsal schedule with your children so that all schedule details are clearly communicated.

## COMMUNICATION/ CORRESPONDENCE

While most information is sent through the mail, occasionally items may be distributed at rehearsals. IT IS IMPORTANT that all information is shared with parents, especially those items pertaining to deadlines, rehearsal changes, and other important announcements.

## REHEARSALS

You will find rehearsal schedules for all SYO ensembles in this guide. Please find the schedule that pertains to YOUR orchestra and refer to it often. Mark all dates on your calendar, and be sure that your parents are aware of all these dates as well.

An attendance sign-in sheet will be located outside the door of the rehearsal room. BE SURE TO CHECK OFF YOUR NAME or you will be marked absent. Tardiness is disruptive to rehearsal -- please arrive 10 minutes early to tune and warm up, and be in your seat at the start of rehearsal.

### Rehearsal Reminders

- ❖ Bring your own music and pencils - do not rely on your stand partner.
- ❖ Come musically prepared. Orchestra rehearsal is not your personal rehearsal time.
- ❖ If you have misplaced music, please call ahead and a copy will be waiting for you in the office. If you are in the middle of rehearsal, please use your stand partner's music and obtain another copy after rehearsal.
- ❖ If you are absent or tardy for rehearsal, it is your responsibility to find out what you missed. Please obtain all new music markings from your stand partner.
- ❖ Social conversation should be limited to breaks (if one) and after rehearsal.
- ❖ No food, gum, or drinks are allowed in the rehearsal room.
- ❖ All string players should have an extra set of strings in their instrument case.
- ❖ All woodwind players should have extra reeds in their instrument case.

## DRESS REHEARSAL

All SYO members must be present for dress rehearsals and concerts. Dress rehearsals usually take place one regular rehearsal before the concert and involve a run-through of the concert program. You will find these dates listed on your rehearsal schedule. **You do not need to wear concert attire to the dress rehearsal.**

## CONCERTS

All concerts are listed on the rehearsal schedules. The String Ensemble, Sinfonia Strings, and Concert Orchestra perform two concerts (one Winter and one Spring) at the Prairie Center for the Arts. The Symphony Orchestra will perform two weekend Holiday Concerts, a school holiday show and a spring concert. Additional information will be handed out closer to each concert with details such as call times.

Concert attire for SYSE and SYSS - White shirt/blouse, black pants/skirt, black shoes.

Concert attire for SYCO - Black shirt/blouse (no t-shirts), black pants/skirt, black shoes

Concert attire for SYSO - Black shirt/blouse, black pants/skirt, black shoes. MALES: Tuxedo if you have one.

All attire should be respectable. Skirts should be at least knee length, shirts should have sleeves, and clothing should not be tight-fitting.

Concert Tickets - Tickets are general seating and cost \$5/adults and \$3/ages 12 and under in advance (All ages \$7 at the door)\*. We encourage you to purchase your tickets in advance - it saves you money and reduces time at the box office. Tickets can be conveniently ordered with a credit card online at [www.prairiecenter.org](http://www.prairiecenter.org) or over the phone Monday - Friday between 8am - 6pm.

\* SYSO Holiday concert ticket prices (reserved seating) will be announced with the Prairie Center's 2009-10 season of entertainment.

Reception - All SYO concerts (except the SYSO Holiday concert) will have a post-concert reception. Drinks are provided by the Schaumburg Youth Orchestra, and parents are asked to bring goodies such as brownies, cookies, crackers, etc.

## MUSIC

All students will receive a folder with music at the first rehearsal. This folder will have your name on it and you are responsible for this folder at all times. If your folder is lost, there will be a \$5 charge to replace it and the music (\$10 charge for Symphony members).

## ATTENDANCE

The productivity of an orchestra's rehearsal depends on the attendance of its members. Being a responsible member of the SYO requires your total commitment, starting with your presence at all rehearsals and concerts.

Absences - only two absences will be allowed per semester. A third absence may result in a conference with the appropriate director, student and parents and possible dismissal from the group.

*Pre-excused absences must be submitted at least two weeks prior to the rehearsal date to be missed.* Pre-excuses may be submitted through the orchestra's website ([www.schaumburyouthorchestra.org](http://www.schaumburyouthorchestra.org)) or by contacting Orchestra Assistant Cassandra Herman at [cherman@ci.schaumburg.il.us](mailto:cherman@ci.schaumburg.il.us) or 847-923-3604. **There is absolutely no excuse for not providing timely notice to the orchestra assistant prior to an absence.** Unexcused absences include (but are not limited to) birthday or family parties, homework, and forgetting to attend rehearsal (please refer to the schedule often!).

Tardiness - It is very important for students to arrive 10 minutes early to rehearsal and be seated at the start of rehearsal. Your tardiness can be very disruptive to the rehearsal. If you are late, please check in at the office so you are not marked absent. Two tardies will count as one absence.

School conflicts - The SYO realizes that many of our students have other activities at school, and measures have been taken to avoid schedule conflicts. If you become aware of a conflict with the rehearsal schedule, please inform the SYO staff immediately so that the issue can be addressed.

Unable to play - If you are unable to play your instrument for any reason, you are still expected to come to rehearsal, take notes and stay "in tune" with what's going on in your section.

## SYO MEMBERSHIP

We are happy to have you as a member of the Schaumburg Youth Orchestra program! You have been accepted into one of four ensembles that best fits your needs as well as the needs of the SYO. **The SYO expects that you will take this membership very seriously, following the guidelines outlined in this handbook.**

The SYO is an extracurricular program for those students wishing to be challenged outside of their school music program. All members of the Schaumburg Youth Orchestra must abide by the participation policy of the program:

**The Musician (SYO member) agrees to participate in his/her school music program. Alternatively, the Musician may request that his/her school music educator provide information to the SYO that would justify a waiver of this requirement by the SYO. The Schaumburg Youth Orchestra grants waivers infrequently and only in extraordinary circumstances.**

This policy will help to continue your growth as a musician on a daily basis and give you opportunities within the school music program such as tours, festivals, and musicals. The SYO has also established relationships with many area school music teachers who have helped recruit many of our current SYO members.

Private lessons are not required to be an SYO member, but are strongly encouraged as they, too, help with your growth as a musician. If you are in search of a private teacher, the SYO publishes a teacher directory comprised of area music teachers that are available upon request.

## FUNDRAISERS

Fundraising is integral to the success of the program. Funds earned through SYO activities such as Entertainment Book, popcorn and concession sales, and outside ensemble gigs help support sectional coaching, music purchases, and many other expenses. Participation in fundraising events is strongly encouraged for all members and, where possible, their families.

## TUITION AND PAYMENT

The SYO's annual registration fee of \$225 is one of the lowest in the Chicago area. Tuition includes membership to the Prairie Center Arts Foundation and pre-payment for an Entertainment book to be resold for fundraising purposes. Payment is expected no later than the first rehearsal.

### **Payment must be made with TWO checks in the following amounts:**

- 1) \$200 payable to the *Village of Schaumburg*
- 2) \$25 payable to the *Prairie Center Arts Foundation* - per family

Those families with more than one student in the SYO will receive a \$25 discount for each additional student after one student is paid in full (deductions should be taken from amount paid to the Village of Schaumburg).

***Tuition is non-refundable.***

## UNSUPERVISED CHILDREN AT REHEARSAL

Please bear in mind that the Prairie Center, in addition to hosting the Schaumburg Youth Orchestra, also holds government meetings, business seminars, and other functions, often during rehearsal hours. Parents are welcome to remain at the Prairie Center while their children are in rehearsal. However, **children not in the orchestra program who are at rehearsal (i.e. members' siblings) must be supervised by an adult** at all times while at the Prairie Center.

# Schaumburg Youth Symphony Orchestra

Joseph Malmquist, Director

## Rehearsal Schedule for 2009-2010 Season

DATE	TIME	ENSEMBLE
Sunday, September 13	6:30 – 9 pm	Full Ensemble
Sunday, September 20	6:30 – 9 pm	Full Ensemble
Sunday, September 27	6:30 - 9 pm	Full Ensemble
Sunday, October 4	6:30 – 9 pm	Full Ensemble
<b>Tuesday, October 6</b>	<b>7:30 – 9:15 pm</b>	<b>SECTIONALS</b>
Sunday, October 11	NO REHEARSAL	
Sunday, October 18	6:30 - 9 pm	Full Ensemble
Sunday, October 25	6:30 – 9 pm	Full Ensemble
Sunday, November 1	6:30 – 9 pm	Full Ensemble
Sunday, November 8	6:30 – 9 pm	Full Ensemble
<b>Tuesday, November 10</b>	<b>7:30 - 9:15 pm</b>	<b>SECTIONALS</b>
Sunday, November 15	6:30 - 9 pm	Full Ensemble
Sunday, November 22	6:30 - 9 pm	Full Ensemble
Sunday, November 29	6:30 – 9 pm	Full Ensemble
Sunday, December 6	6:30 – 9 pm	<b>Location TBA</b>
Sunday, December 13	6:30 – 9 pm	<b>Location TBA</b>
Tuesday, December 15	6:30 – 9 pm	Full Ensemble
Thursday, December 17	6:30 – 9 pm	Dress Rehearsal
<b>Friday, December 18</b>	<b>9:45 am</b>	<b>School Show</b>
<b>Saturday, December 19</b>	<b>3:30 pm &amp; 7:30 pm</b>	<b>PRESTO Holiday!</b>
Sunday, December 20	NO REHEARSAL	
Sunday, December 27	NO REHEARSAL	
Sunday, January 3	6:30 - 9 pm	Full Ensemble
Sunday, January 10	6:30 – 9 pm	Full Ensemble
Sunday, January 17	NO REHEARSAL	
Sunday, January 24	6:30 - 9 pm	Full Ensemble
Sunday, January 31	6:30 - 9 pm	Full Ensemble
Sunday, February 7	6:30 - 9 pm	Full Ensemble
Sunday, February 14	NO REHEARSAL	
Sunday, February 21	6:30 - 9 pm	Full Ensemble
Sunday, February 28	TBA	Full Ensemble
Sunday, March 7	6:30 – 9 pm	Full Ensemble
Sunday, March 14	6:30 – 9 pm	Full Ensemble

<b>Tuesday, March 16</b>	<b>7:30 - 9:15 pm</b>	<b>SECTIONALS</b>
Sunday, March 21	NO REHEARSAL	
Sunday, March 28	6:30 – 9 pm	Full Ensemble
Sunday, April 4	NO REHEARSAL	
Sunday, April 11	6:30 – 9 pm	Full Ensemble
<b>Tuesday, April 13</b>	<b>7:30 - 9:15 pm</b>	<b>SECTIONALS</b>
Sunday, April 18	6:30 - 9 pm	Full Ensemble
Sunday, April 25	6:30 – 9 pm	Full Ensemble
Sunday, May 2	6:30 – 9 pm	Full Ensemble
Sunday, May 9	6:30 – 9 pm	Full Ensemble
Saturday, May 15	9 – 11:30 am	Full Ensemble
<b>Sunday, May 16</b>	<b>7:30 pm</b>	<b>SPRING CONCERT</b>

*Schedule Subject to Change*

***For current schedule information (including last-minute changes), visit the member section of [www.schaumburgyouthorchestra.org](http://www.schaumburgyouthorchestra.org).***

# Schaumburg Youth Concert Orchestra

Michelle Freeland, Director

Rehearsal Schedule for 2009-2010 Season

**PLEASE NOTE THAT FOR ALL REHEARSALS (except Sectionals **and** where marked "EVERYONE") WINDS, BRASS & PERCUSSION WILL REHEARSE FROM 7:30 – 8:30 pm.**

The first half hour will be strings only. Full orchestra (strings, winds & brass) rehearses from 7:30 – 8:30 pm.

DATE	TIME	ENSEMBLE
Tuesday, September 22	7 – 8:30 pm (EVERYONE)	Full Ensemble
Tuesday, September 29	7 – 8:30 pm	Full Ensemble
	8:30 – 8:45 pm	Violin I Sectional
<b>Tuesday, October 6</b>	<b>6:15 – 7:15 pm</b>	<b>SECTIONALS (everyone)</b>
Tuesday, October 13	7 – 8:30 pm	Full Ensemble
	8:30 – 8:45 pm	Violin II/Viola Sectional
Tuesday, October 20	7 – 8:30 pm	Full Ensemble
	8:30 – 8:45 pm	Cello/Bass Sectional
Tuesday, October 27	7 – 8:30 pm	Full Ensemble
	8:30 – 8:45 pm	Violin I Sectional
Tuesday, November 3	7 – 8:30 pm	Full Ensemble
	8:30 – 8:45 pm	Violin II Sectional
<b>Tuesday, November 10</b>	<b>6:15 – 7:15 pm</b>	<b>SECTIONALS</b>
Tuesday, November 17	7 – 8:30 pm	Full Ensemble
	8:30 – 8:45 pm	Viola Sectional
Tuesday, November 24	7 – 8:30 pm	Full Ensemble
	8:30 – 8:45 pm	Cello/Bass Sectional
Tuesday, December 1	7 – 8:45 pm (EVERYONE)	Full Ensemble
Tuesday, December 8	7 – 8:45 pm (EVERYONE)	Full Ensemble
Tuesday, December 15	NO REHEARSAL	
Tuesday, December 22	NO REHEARSAL	
Tuesday, December 29	NO REHEARSAL	
Tuesday, January 5	7 – 8:30 pm (EVERYONE)	Full Ensemble
	8:30 – 8:45 pm	Wind/Brass sectional
Tuesday, January 12	7 – 8:30 pm (EVERYONE)	Full Ensemble
	8:30 – 8:45 pm	Wind/Brass sectional
Tuesday, January 19	7 – 8:45 pm (EVERYONE)	Full Ensemble
Tuesday, January 26	7 – 8:45 pm (EVERYONE)	Full Ensemble
<b>Tuesday, February 2</b>	<b>7:30 pm</b>	<b>WINTER CONCERT</b>

Tuesday, February 9	NO REHEARSAL	
Tuesday, February 16	7 – 8:30 pm	Full Ensemble
	8:30 – 8:45 pm	Violin I sectional
Tuesday, February 23	7 – 8:30 pm	Full Ensemble
	8:30 – 8:45 pm	Violin II Sectional
Tuesday, March 2	7 – 8:30 pm	Full Ensemble
	8:30 – 8:45 pm	Viola Sectional
Tuesday, March 9	7 – 8:30 pm	Full Ensemble
	8:30 – 8:45 pm	Cello/Bass sectional
<b>Tuesday, March 16</b>	<b>6:15 – 7:15 pm</b>	<b>SECTIONALS</b>
Tuesday, March 23	NO REHEARSAL	
Tuesday, March 30	7 – 8:30 pm	Full Ensemble
	8:30 – 8:45 pm	Violin I Sectional
Tuesday, April 6	7 – 8:30 pm	Full Ensemble
	8:30 – 8:45 pm	Violin II Sectional
<b>Tuesday, April 13</b>	<b>6:15 – 7:15 pm</b>	<b>SECTIONALS</b>
Tuesday, April 20	7 – 8:30 pm	Full Ensemble
	8:30 – 8:45 pm	Viola Sectional
Tuesday, April 27	7 – 8:30 pm	Full Ensemble
	8:30 – 8:45 pm	Cello/Bass Sectional
Tuesday, May 4	7 – 8:30 pm (EVERYONE)	Full Ensemble
	8:30 – 8:45 pm	Winds/Brass Sectional
Tuesday, May 11	7 – 8:45 pm (EVERYONE)	Full Ensemble
Tuesday, May 18	7 – 8:45 pm (EVERYONE)	Full Ensemble
<b>Tuesday, May 25</b>	<b>7:30 pm</b>	<b>SPRING CONCERT</b>

*Schedule Subject to Change*

*For current schedule information (including last-minute changes), visit the member section of [www.schaumburgyouthorchestra.org](http://www.schaumburgyouthorchestra.org).*

# Schaumburg Youth Sinfonia Strings

Greta Hess, Director

## Rehearsal Schedule for 2009-10 Season

DATE	TIME	ENSEMBLE
Tuesday, September 15	5:30 – 6:45 pm	Full Ensemble
Tuesday, September 22	5:30 – 6:45 pm	Full Ensemble
Tuesday, September 29	5:30 – 6:45 pm	Full Ensemble
<b>Tuesday, October 6</b>	<b>5:15 – 6 pm</b>	<b>Full Ensemble</b>
Tuesday, October 13	NO REHEARSAL	
Tuesday, October 20	5:30 – 6:45 pm	Full Ensemble
Tuesday, October 27	5:30 - 6:45 pm	Full Ensemble
Tuesday, November 3	5:30 - 6:45 pm	Full Ensemble
<b>Tuesday, November 10</b>	<b>5:15 - 6 pm</b>	<b>Full Ensemble</b>
Tuesday, November 17	5:30 - 6:45 pm	Full Ensemble
Tuesday, November 24	5:30 – 6:45 pm	Full Ensemble
Tuesday, December 1	5:30 – 6:45 pm	Full Ensemble
Tuesday, December 8	5:30 – 6:45 pm	Full Ensemble
Tuesday, December 15	NO REHEARSAL	
Tuesday, December 22	NO REHEARSAL	
Tuesday, December 29	NO REHEARSAL	
Tuesday, January 5	5:30 - 6:45 pm	Full Ensemble
Tuesday, January 12	5:30 - 6:45 pm	Full Ensemble
Tuesday, January 19	5:30 - 6:45 pm	Full Ensemble
Tuesday, January 26	5:30 - 6:45 pm	Full Ensemble
<b>Tuesday, February 2</b>	<b>7:30 pm</b>	<b>WINTER CONCERT</b>
Tuesday, February 9	NO REHEARSAL	
Tuesday, February 16	5:30 - 6:45 pm	Full Ensemble
Tuesday, February 23	5:30 - 6:45 pm	Full Ensemble
Tuesday, March 2	5:30 - 6:45 pm	Full Ensemble
Tuesday, March 9	5:30 – 6:45 pm	Full Ensemble
<b>Tuesday, March 16</b>	<b>5:15 - 6 pm</b>	<b>Full Ensemble</b>
Tuesday, March 23	NO REHEARSAL	
Tuesday, March 30	5:30 - 6:45 pm	Full Ensemble
Tuesday, April 6	5:30 – 6:45 pm	Full Ensemble
<b>Tuesday, April 13</b>	<b>5:15 - 6 pm</b>	<b>Full Ensemble</b>
Tuesday, April 20	5:30 - 6:45 pm	Full Ensemble
Tuesday, April 27	5:30 - 6:45 pm	Full Ensemble
Tuesday, May 4	5:30 - 6:45 pm	Full Ensemble
Tuesday, May 11	5:30 - 6:45 pm	Full Ensemble
Tuesday, May 18	5:30 – 6:45 pm	Full Ensemble
<b>Tuesday, May 25</b>	<b>7:30 pm</b>	<b>SPRING CONCERT</b>

*Schedule Subject to Change*

*For current schedule information (including last-minute changes), visit the member section of [www.schaumburgyouthorchestra.org](http://www.schaumburgyouthorchestra.org).*

# Schaumburg Youth String Ensemble

Dung Pham, Director

## Rehearsal Schedule for 2009 - 2010 Season

**PLEASE NOTE:** The entire group will rehearse from 6:15 - 7 pm and Sectionals will run from 5:45 – 6:15 pm or 7 – 7:30 pm (sections will alternate between these two times). A detailed sectional schedule will be handed out at the first rehearsal.

DATE	TIME	
Monday, September 14	6:15 – 7 pm	
Monday, September 21	6:15 – 7 pm	
Monday, September 28	6:15 – 7 pm	
Monday, October 5	6:15 – 7 pm	
Monday, October 12	NO REHEARSAL	
Monday, October 19	6:15 – 7 pm	
Monday, October 26	6:15 – 7 pm	
Monday, November 2	6:15 – 7 pm	
Monday, November 9	6:15 – 7 pm	
Monday, November 16	6:15 – 7 pm	
Monday, November 23	6:15 – 7 pm	
Monday, November 30	6:15 – 7 pm	
Monday, December 7	6:15 – 7 pm	
<b>Monday, December 14</b>	<b>7 pm</b>	<b>Winter Concert</b>
Monday, December 21	NO REHEARSAL	
Monday, December 28	NO REHEARSAL	
Monday, January 4	6:15 – 7 pm	
Monday, January 11	6:15 – 7 pm	
Monday, January 18	NO REHEARSAL	
Monday, January 25	6:15 – 7 pm	
Monday, February 1	6:15 – 7 pm	
Monday, February 8	6:15 – 7 pm	
Monday, February 15	NO REHEARSAL	
Monday, February 22	6:15 – 7 pm	
Monday, March 1	6:15 – 7 pm	
Monday, March 8	6:15 – 7 pm	
Monday, March 15	6:15 – 7 pm	
Monday, March 22	NO REHEARSAL	
Monday, March 29	6:15 – 7 pm	
Monday, April 5	6:15 – 7 pm	
Monday, April 12	6:15 – 7 pm	
Monday, April 19	6:15 – 7 pm	
Monday, April 26	6:15 – 7 pm	
Monday, May 3	6:15 – 7 pm	
Monday, May 10	6:15 – 7 pm	
<b>Monday, May 17</b>	<b>7 pm</b>	<b>Spring Concert</b>

*Schedule Subject to Change*

*For current schedule information (including last-minute changes), visit the member section of [www.schaumburyouthorchestra.org](http://www.schaumburyouthorchestra.org).*

# Schaumburg Youth Orchestra

## Member/SYO Contract

**Please read the following statements carefully.**

*Sign both copies, keeping one for your records and returning the other by the first rehearsal.*

### **Attendance**

All SYO members are expected to make rehearsals and concerts a priority. Only two absences are allowed per semester, whether excused or unexcused. It is at the conductors' discretion to dismiss a member from an ensemble because of excessive absences. Pre-excuses may be submitted through the orchestra's website ([www.schaumburgyouthorchestra.org](http://www.schaumburgyouthorchestra.org)) or by contacting Orchestra Assistant Cassandra Herman at [cherman@ci.schaumburg.il.us](mailto:cherman@ci.schaumburg.il.us) or 847-923-3604.

### **Tuition**

The annual tuition for the SYO is \$225 per student, with a \$25 discount for additional family members after the first is paid in full. This payment is due **NO LATER** than the first rehearsal. (see page 8 of the SYO Reference Guide for instructions on writing checks).

**Tuition is non-refundable.**

### **School Participation**

The Musician (SYO member) agrees to participate in his/her school music program. Alternatively, the Musician may request that his/her school music educator provide information to the SYO that would justify a waiver of this requirement by the SYO. The Schaumburg Youth Orchestra grants waivers infrequently and only in extraordinary circumstances.

### **Conduct**

Professional conduct is expected at all times. Courteous respect for directors and fellow musicians will be expressed through attentiveness, no talking while rehearsal is in progress, and a cooperative effort that will benefit the entire orchestra's performance.

*I have read the Reference Guide and agree to the above statements as a member of the Schaumburg Youth Orchestra. I understand that failure to comply with the above policies may result in my dismissal from the SYO.*

\_\_\_\_\_  
Student Signature

\_\_\_\_\_  
Parent Signature

\_\_\_\_\_  
Student (Print Name)

Member of:

- String Ensemble
- Sinfonia Strings
- Concert Orchestra
- Symphony Orchestra

# Schaumburg Youth Orchestra

## Member/SYO Contract

**Please read the following statements carefully.**

*Sign both copies, keeping one for your records and returning the other by the first rehearsal.*

### **Attendance**

All SYO members are expected to make rehearsals and concerts a priority. Only two absences are allowed per semester, whether excused or unexcused. It is at the conductors' discretion to dismiss a member from an ensemble because of excessive absences. Pre-excuses may be submitted through the orchestra's website ([www.schaumburgyouthorchestra.org](http://www.schaumburgyouthorchestra.org)) or by contacting Orchestra Assistant Cassandra Herman at [cherman@ci.schaumburg.il.us](mailto:cherman@ci.schaumburg.il.us) or 847-923-3604.

### **Tuition**

The annual tuition for the SYO is \$225 per student, with a \$25 discount for additional family members after the first is paid in full. This payment is due **NO LATER** than the first rehearsal. (see page 8 of the SYO Reference Guide for instructions on writing checks).

**Tuition is non-refundable.**

### **School Participation**

The Musician (SYO member) agrees to participate in his/her school music program. Alternatively, the Musician may request that his/her school music educator provide information to the SYO that would justify a waiver of this requirement by the SYO. The Schaumburg Youth Orchestra grants waivers infrequently and only in extraordinary circumstances.

### **Conduct**

Professional conduct is expected at all times. Courteous respect for directors and fellow musicians will be expressed through attentiveness, no talking while rehearsal is in progress, and a cooperative effort that will benefit the entire orchestra's performance.

*I have read the Reference Guide and agree to the above statements as a member of the Schaumburg Youth Orchestra. I understand that failure to comply with the above policies may result in my dismissal from the SYO.*

\_\_\_\_\_  
Student Signature

\_\_\_\_\_  
Parent Signature

\_\_\_\_\_  
Student (Print Name)

Member of:

- \_\_\_\_ String Ensemble
- \_\_\_\_ Sinfonia Strings
- \_\_\_\_ Concert Orchestra
- \_\_\_\_ Symphony Orchestra



Schaumburg  
Youth  
Orchestra

a program of



VILLAGE OF SCHAUMBURG

sponsored by



motorola  
foundation

The Rippinger Financial Group of Companies



Illinois  
**ARTS**  
Council  
AN AGENCY OF  
THE STATE OF ILLINOIS

This program is  
partially sponsored  
by a grant from the  
Illinois Arts Council!